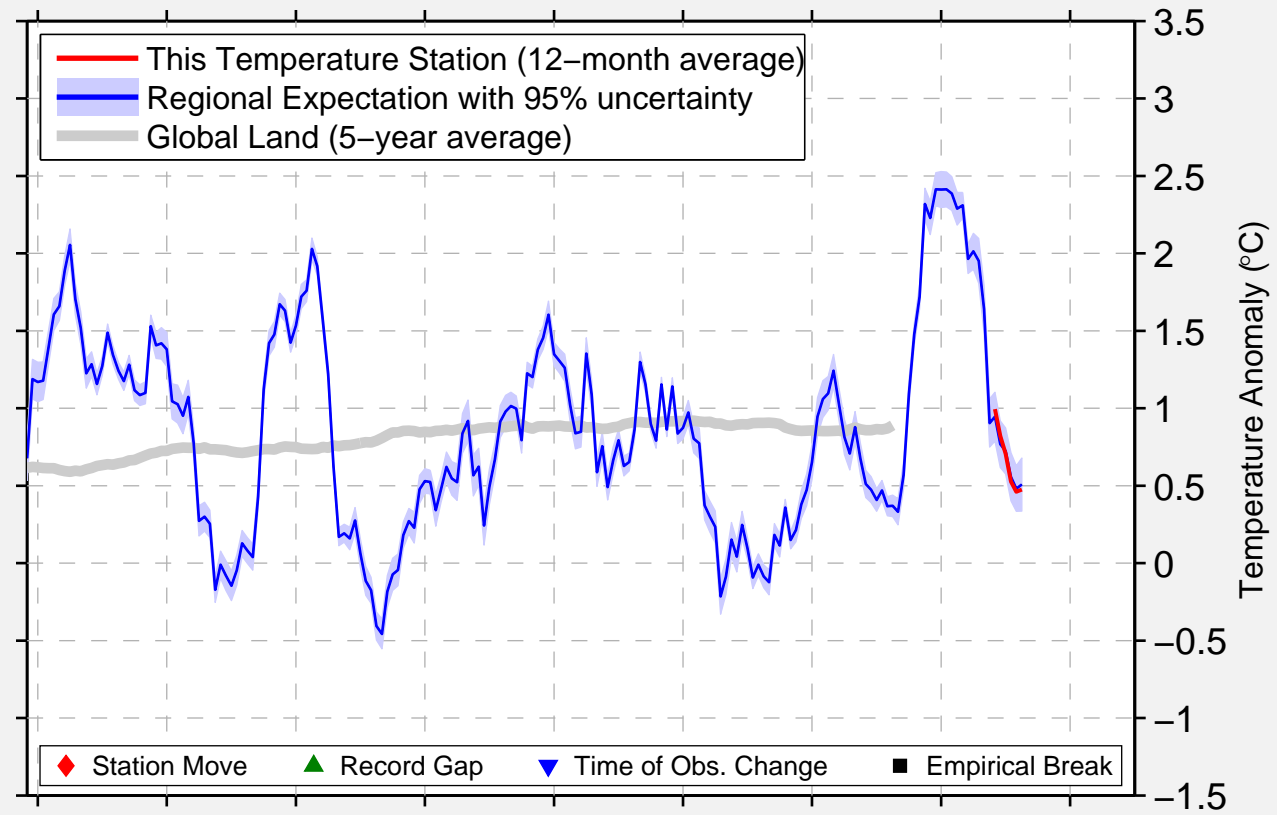


# BEAVER FALLS 1 NE

40.767 N, 80.361 W (United States)

— This Temperature Station (12-month average)  
— Regional Expectation with 95% uncertainty  
— Global Land (5-year average)

◆ Station Move    ▲ Record Gap    ▼ Time of Obs. Change    ■ Empirical Break



1998    2000    2002    2004    2006    2008    2010    2012    2014

Data Quality Controlled and Aligned at Breakpoints

Berkeley Earth